

# Autoimmune concepts of multiple sclerosis as a basis for selective immunotherapy: From pipe dreams to (therapeutic) pipelines

Reinhard Hohlfeld<sup>†\*§</sup> and Hartmut Wekerle<sup>†</sup>

<sup>†</sup>Department of Neuroimmunology, Max Planck Institute for Neurobiology, Am Klopferspitz, D-82152 Martinsried, Germany; and <sup>‡</sup>Institute for Clinical Neuroimmunology, Ludwig Maximilians University, Klinikum Grosshadern, Marchioninistrasse 15, D-81366 Munich, Germany

**Autoimmune T and B cell responses to CNS antigen(s) are thought to drive the pathogenesis of multiple sclerosis (MS), and thus are logical targets for therapy. Indeed, several immunomodulatory agents, including IFN- $\beta$ 1b, IFN- $\beta$ 1a, glatiramer acetate, and mitoxantrone, have had beneficial clinical effects in different forms of MS. However, because the available treatments are only partially effective, MS therapy needs to be further improved. Selective (antigen-specific) immunotherapies are especially appealing because in theory they combine maximal efficacy with minimal side effects. Indeed, several innovative immunotherapies have been successfully applied in experimental autoimmune encephalomyelitis. For example, autoreactive T cells can be selectively targeted by means of antigen, T cell receptor, or activation markers. However, experimental autoimmune encephalomyelitis is far from being a perfect approximation of MS because MS is more heterogeneous and the target antigen(s) is (are) not known. Further advances in MS therapy will depend on our growing understanding of the pathogenesis of this still incurable disease.**

**M**ultiple sclerosis (MS) is one of the most common neurological diseases of young adults in Europe and North America (1). Worldwide,  $\approx$ 1 million people are afflicted by this chronic inflammatory disease of the CNS. Histological hallmarks of active MS include infiltrations of T cells, macrophages, and B cells, degradation of myelin, and, to a lesser extent, axons, and reactive changes of astrocytes and microglia (2). It is usually assumed that these inflammatory changes reflect an autoimmune attack against myelin components. Other perhaps less likely possibilities are that the inflammatory reaction is primarily directed against an unknown infectious agent (3, 4), or that the inflammatory changes are secondary to a primary degenerative process.

In the following, we will broadly trace the steps by which the pipe dream of selective immunotherapy might become a reality: beginning with experimental autoimmune encephalomyelitis (EAE), confronting the obstacles in the search for a target antigen of MS, and concluding with the selective immunotherapies currently being explored.

## MS and EAE

The current concepts of MS as an autoimmune disease are based on direct studies of MS lesions and animal models of inflammatory demyelination. Among these disease models, EAE is one of the most widely studied autoimmune disease paradigms. This research has provided profound insights into not only autoimmune but also basic immunological mechanisms (5). EAE can be induced in many species by active immunization with myelin antigens. The classic encephalitogenic antigen is myelin basic protein (MBP), the first to be identified. Later, other myelin and non-myelin antigens were also shown to induce EAE [e.g.,

proteolipid protein, myelin oligodendrocyte glycoprotein (MOG), and S-100 $\beta$ ].

Particularly striking was the observation that the transfer of purified, activated MBP-specific CD4<sup>+</sup> T cells into healthy syngeneic animals can induce EAE in the recipients (“transfer EAE”) (6). This study was the first formal demonstration that an autoaggressive T cell is sufficient to launch an organ-specific autoimmune disease. Subsequent studies revealed that injection of autoantibodies against a surface-exposed myelin antigen, MOG, can amplify the T cell attack by inducing large-scale demyelination (7, 8). More recent work has revealed that not only CD4<sup>+</sup> myelin-specific T cells but also CD8<sup>+</sup> T cells have encephalitogenic potential (9, 10).

Whereas EAE is considered useful, it is far from the ideal model for investigating novel therapies (5, 11). Many ingenious therapeutic strategies were first developed and successfully tested in EAE, but several therapies that had certain beneficial effects in EAE-exacerbated MS (e.g., inhibitors of tumor necrosis factor- $\alpha$ ; ref. 12). So far, only a few of the therapies that were successful in EAE could be shown to be efficacious in human MS (13, 14). This finding holds particularly true for antigen- and antigen receptor-selective therapies. Likely reasons are that the inciting antigen(s) are not known in individual cases of MS, that the B and T cell receptor (TCR) repertoire of the participating inflammatory cells is more diverse in MS than it is in certain EAE models, and that MS is heterogeneous.

## MS Heterogeneity and the Search for Target Antigen(s)

The search for a target antigen of MS is hindered by the fact that human MS is very heterogeneous. Not only is its clinical course and presentation extremely diverse, but there is increasing evidence of pathogenetic heterogeneity as well. Recently, criteria for the histological classification of MS subtypes have been developed. Lassmann *et al.* (2) have proposed four basic types of lesions: macrophage-mediated demyelination (type I), antibody-mediated demyelination (type II), distal oligodendroglialopathy (type III), and demyelination secondary to oligodendrocyte damage (type IV) (2). These patterns were originally distinguished in a cross-sectional study of biopsy specimens from MS

This paper results from the Arthur M. Sackler Colloquium of the National Academy of Sciences, “Therapeutic Vaccines: Realities of Today and Hopes for Tomorrow,” held April 1–3, 2004, at the National Academy of Sciences in Washington, DC.

Abbreviations: APC, antigen-presenting cell; APL, altered peptide ligand; CDR, complementarity-determining region; EAE, experimental autoimmune encephalomyelitis; GA, glatiramer acetate; MBP, myelin basic protein; MOG, myelin oligodendrocyte glycoprotein; MS, multiple sclerosis; TCR, T cell receptor; TH, T helper.

<sup>§</sup>To whom correspondence should be addressed. E-mail: reinhard.hohlfeld@med.uni-muenchen.de.

© 2004 by The National Academy of Sciences of the USA

patients who had an unusual clinical presentation that required biopsy for diagnostic clarification (15).

Two principal approaches have been taken to search for the target (auto)antigens of MS. One method is to study human B and T cell responses directed against established antigens like MBP, MOG, or proteolipid protein, i.e., antigens known to be capable of inducing EAE. The other approach is to investigate the repertoire of the antigen receptors expressed by human B and T cells. In contrast to the first approach, the second strategy does not depend on *a priori* knowledge of the antigen (16). Neither of these strategies has yet led to unequivocal identification of the target antigen(s) of MS.

### Current Knowns and Unknowns About CNS Antigen-Specific Immune Cell Responses

**Myelin-Specific T Cells Are Constitutive Components of the Healthy Immune System.** Classic experiments demonstrated that MBP-specific T cells from immunized donors are capable of transferring EAE in the Lewis rat (6). Subsequently, MBP-specific T cells were isolated *in vitro*, even from unmanipulated, naïve rats, and these T cells could also transfer EAE to syngeneic naïve recipients (17). These findings were an early demonstration that autoreactive T cells are not generated *de novo* after immunization *in vivo*, but they already exist as preformed elements in the healthy immune system.

These studies raised the question of whether myelin-autoreactive T cells are also present in the human immune repertoire, and if so, why they seem to remain innocuous in healthy people but become encephalitogenic in MS patients. The “split-well” cloning technique has allowed the isolation of myelin autoantigen-specific T cells from MS patients and normal subjects (18, 19). Stimulation of blood T cells with MBP *in vitro* leads to the proliferation of MBP-specific CD4<sup>+</sup> T cells, which, in humans, recognize different epitope clusters spread along the entire length of the MBP molecule (18, 20–24). In contrast, in several rodent models the MBP-specific T cell response is strikingly focused on only one immunodominant epitope (25). Also, in humans, some MBP epitopes are recognized more frequently than others, both at the population level and in individual subjects. These relatively immunodominant epitopes include region MBP 85–99, which is presented in the context of the HLA allele DRB1\*1501, and is associated with MS. It should be noted, however, that the human T cell response to MBP region 85–99 shows remarkable microheterogeneity, both in terms of fine epitope specificity and TCR use (23).

**MBP and Other Autoantigens Have Pathogenic Potential in Humans.** MBP-specific T cells are autoreactive, but can they become pathogenic? The only way to formally demonstrate the encephalitogenic potential of human myelin-specific T cells in healthy people is to adoptively transfer these cells into an autologous recipient, on analogy to the pioneering experiment in the Lewis rat (6). Although it is impossible to do such transfer experiments for ethical reasons, several indirect arguments strongly suggest that human MBP-specific CD4<sup>+</sup> T cells are indeed potentially pathogenic.

First, the split-well technique allowed the isolation of MBP-specific T cells from outbred primates. The immune system of rhesus monkeys is very similar to the human immune system, and even shares similar molecular structures (26). MBP-specific T cells from rhesus monkeys recognize different epitopes of MBP, as do their human counterparts (27). The encephalitogenic potential of the rhesus cells was directly demonstrated by autologous transfer. Similar results were reported by the group of Genain *et al.* (28) who isolated MBP- and MOG (29)-specific T cells from the peripheral blood of healthy, nonimmunized marmosets, and adoptively transferred EAE to a chimeric twin. Because the *in vitro* conditions in these experiments were the

same as in the experiments with human T cells, it is reasonable to extrapolate the results to humans.

A second line of evidence rests on experiments with “humanized” transgenic mice. Fugger and coworkers (30) were the first to express three human components involved in T cell recognition of MBP in transgenic mice: the appropriate DRA\*0101/DRB1\*1501 (HLA-DR2) MHC restriction molecule, a TCR specific for the HLA-DR2-bound MBP 84–102 peptide, and the human CD4 coreceptor. When the transgenic mice were backcrossed to recombination activating gene-deficient mice, the incidence of spontaneous disease drastically increased. These experiments clearly demonstrate that T cells specific for the HLA-DR2-bound MBP peptide can induce disease. They also suggest these cells are normally held in check by regulatory T cells, which are absent in the recombination activating gene-deficient mice.

A third argument comes from observations in MS patients. In a phase II clinical trial, an altered peptide ligand (APL) of MBP seemed to exacerbate the disease in a small number of MS patients. This finding was accompanied by a strong cross-reactive T cell response against MBP83–99, which, in one patient, was restricted to HLA-DRB1\*0404 (31). It is therefore likely that APL treatment in these patients stimulated a cross-reactive pathogenic anti-MBP response, thus providing further indirect evidence of the pathogenic potential of MBP-specific T cells in humans.

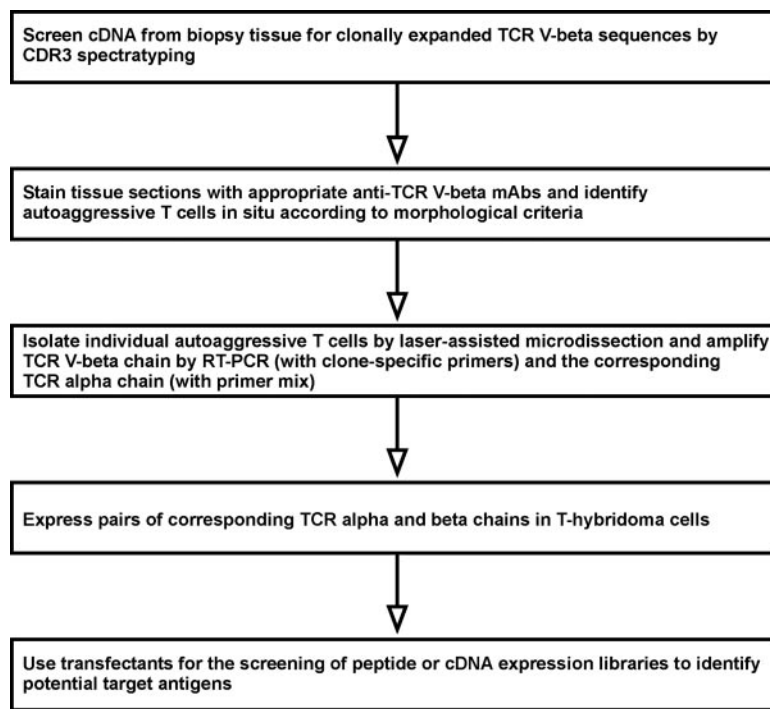
Suggestive as these findings may be, they do not prove that MBP or any other CNS autoantigen acts as the “antigenic target” of MS. Various B and T cell responses to CNS autoantigens have been described in MS patients, but none of the many candidate antigens could be pinpointed as the target of the autoimmune response (32). For example, a number of reports have described subtle changes of various properties of myelin-specific T cells in MS patients, including IL-2 responsiveness (33), hypoxanthine-guanine phosphoribosyltransferase resistance (34), (co)stimulation requirements (35–37), IL-7 sensitivity (38), and avidity for antigen (39). So far, none has been sufficiently reproducible to become generally accepted.

The difficulties in establishing the target antigens of MS are not surprising, in view of the heterogeneity of the disease. Another obstacle is the dynamic nature of the autoimmune response. In rodents the response can spread to different antigens (40). It is difficult to prove that such “epitope spreading” actually occurs in human MS. If it did occur, it would make the identification of the initial triggering antigen very difficult, if not impossible, because even patients who present with their first clinical symptoms usually have had subclinical disease for many years.

**The Triggering Process of MS Is Still Unknown.** Self-tolerance develops and is maintained by several complementary mechanisms, including clonal deletion, anergy, ignorance, and active suppression. At least in theory, failure of any of these mechanisms, e.g., tolerogenic display of autoantigens in the thymus regulated by the autoimmune regulator gene (41), can result in autoimmune disease.

One way to break tolerance is by “antigenic mimicry” (42). Originally, the mimicry concept referred to contiguous sequence identities between peptides from microbes and autoantigens. Subsequently, the concept has been extended to structural resemblance between different peptide–MHC complexes. For example, one human MBP-specific TCR can recognize two completely different peptides: one derived from MBP (bound to HLA-DR2b) and one from the Epstein–Barr virus (bound to HLA-DR2a; ref. 43). In this case, molecular mimicry involves not only two distinct peptides but also two different HLA-DR molecules. Mimicry reactions are favored by the “degeneracy” of T cell recognition (44). Furthermore, autoreactive T cells could be stimulated by microbial “superantigens” or by antigen-nonspecific proinflammatory factors of the innate immune system, which are abundantly expressed in the inflammatory milieu.

Another mechanism causing loss of tolerance is the weakening of the regulatory mechanisms that normally help to keep the autore-



**Fig. 1.** Proposed strategy for the identification of the unknown targets antigens of MS, starting with the characterization of the antigen-specific TCRs expressed by autoaggressive T cell infiltrates in biopsy tissue (16).

active T cells in check. Cellular suppressor mechanisms are still poorly understood. More recent evidence indicates that distinct populations of CD4<sup>+</sup>CD25<sup>+</sup>, CD4<sup>+</sup>CD25<sup>-</sup>, and CD8<sup>+</sup> regulatory T cells contribute to the maintenance of self-tolerance, and that the function of CD4<sup>+</sup>CD25<sup>+</sup> regulatory T cells might indeed be disturbed in MS (45). The precise mechanisms of regulatory cell function and dysfunction have yet to be defined (46–48).

Very recently, a different line of evidence has provided support for the possibility that the inflammatory, presumably autoimmune reaction might be secondary to some form of degenerative or infectious injury. At least in some MS cases and lesions, oligodendrocyte apoptosis seems to precede leukocyte infiltration and demyelination (49, 50). The cause of these oligodendrocyte changes, which have not been observed in EAE models, is unknown.

#### Techniques for Finding the Target Antigen(s) of MS

A number of approaches have emerged for the identification and functional reconstruction of pathogenic T cells directly from biopsy or autopsy tissue (16). Oksenberg *et al.* (51, 52) were the first to use PCR techniques to demonstrate expanded TCR V- $\alpha$  (51) and V- $\beta$  chain (52) sequences in CNS tissue homogenates of MS patients. Intriguingly, one TCR V- $\beta$  complementarity-determining region (CDR)-3 motif was identical to that of a described MBP-specific human T cell clone (52).

However, for the full characterization of a TCR, it is necessary to identify its paired  $\alpha$  and  $\beta$  chains. This goal can only be achieved with single-cell techniques, as they were pioneered by Küppers and Rajewsky and coworkers (164) for studying B cell development and lymphomas. One approach developed by several groups, including our own, is shown in Fig. 1 (16).

So far, the whole series of steps, beginning with the patient's biopsy and ending with the clear-cut identification of the target antigen, has not yet been achieved. In particular, it has been very difficult to coamplify both TCR chains from single T cells. However, the application of single-cell PCR for detailed analysis of the TCR V $\beta$  repertoire in MS lesions has not only been feasible, but has

revealed intriguing insights. For example, we identified several CD8<sup>+</sup> (but not CD4<sup>+</sup>) expanded T cell clones, which were originally present in brain biopsy tissue (53) and subsequently persisted for many years in the blood and cerebrospinal fluid of the same MS patient (54). Some of the expanded CD8<sup>+</sup> T cells showed markers of recent activation. These observations would be consistent with a pathogenic role played by the expanded CD8<sup>+</sup> T cells (55, 56). It would be interesting to identify the pairing  $\alpha$  chains from these T cell clones. If the full TCR were reconstructed, it could be used in the search for the target antigen.

Similar strategies can be applied for the analysis of B cells. Increased synthesis of intrathecal IgG and its distribution as “oligoclonal bands” have long been recognized as diagnostic hallmarks of MS. However, the antigen specificity of these oligoclonal bands has remained a mystery (57). Several studies (58–61) have demonstrated clonally expanded B cells in the CNS and cerebrospinal fluid of MS patients, and this result has been confirmed by single-cell repertoire analysis (62). Similar strategies as described above for T cell repertoires can be used for the identification of the pairing light and heavy Ig chains from individual infiltrating B cells. The pairing chains can be incorporated into recombinant antibodies that can be used in the search for target antigens. This search will be facilitated by progress in “proteomics.” For example, Steinman and colleagues (63, 64) have applied miniaturized autoantigen arrays for large-scale multiplex characterization of autoantibody responses directed against diverse autoantigens. At the present time, these protein arrays are best suited for the detection of antibodies directed against conformation-independent epitopes, but future progress in this area will help to identify new antibody targets.

#### MS Immunotherapy Today

Our expanding knowledge of the immunopathogenesis of MS has led to several therapeutic advances, which, have over the past decade, drastically changed the therapy for MS. Several new disease-modifying agents, including IFN- $\beta$ 1a, IFN- $\beta$ 1b, glatiramer acetate (GA), and mitoxantrone, have been approved and

**Table 1. Antigen-nonspecific candidate agents for the immunomodulatory treatment of MS**

Class	Agents
Cytotoxic agents and procedures	Azathioprine; mycophenolate mofetil; cyclophosphamide; mitoxantrone; methotrexate; linomide derivative (Laquinimod); immunosuppressive fungal macrolides and cyclic peptides (e.g., Cyclosporin-A, Tacrolimus, Sirolimus, and CCI-779); immunoablation, followed by hematopoietic stem cell transplantation.
Immunosuppressive mAbs	Anti-CD3; anti-CD4; anti-CD52 (Campath-1H and Alemtuzumab); anti-IL-2 receptor $\alpha$ -subunit (Daclizumab and Basiliximab); anti-CD20 (Rituximab).
Cytokines and cytokine inhibitors	IFNs (IFN $\beta$ -1a, IFN $\beta$ -1b, IFN- $\alpha$ , and IFN- $\gamma$ ); [tumor necrosis factor (TNF) inhibitors (TNF- $\alpha$ receptor-IgG soluble dimeric p-55 (Lenercept <sup>®</sup> ); anti-TNF- $\alpha$ human/murine chimeric mAb cA2; metalloprotease inhibitors; down-modulatory cytokines [IL-1 inhibitors: IL-4, IL-10, and IL-13; TGF- $\beta$ 2 (BetaKine)]; antibodies against proinflammatory cytokines (e.g., anti-IL-12p40).
Chemokine antagonists and receptor blockers	MCP-1 receptor antagonist; CXCR3 antagonist; CCR1 antagonist; CCR5 antagonist.
Therapies directed at cell adhesion and costimulatory molecules	Humanized anti-CD11/CD18 mAb (Hu23F2G); small-molecule inhibitors of integrins; anti- $\alpha$ 4 integrin mAb (Natalizumab); anti-ICAM-1 (CD54) mAb; anti-CD2 mAb; anti-LFA-3 (CD58) mAb; anti-CD154 mAb; CTLA4-Ig; anti-CD45 mAb.
Others	Plasmapheresis; intravenous immunoglobulins; statins; sphingosine-1-phosphate receptor agonist (FTY720).

are now being widely used (65–67). It is interesting to note that the methodology and design of MS trials has evolved in parallel with the therapeutic agents. In particular, increasingly sophisticated MRI techniques are used to great advantage for the identification and quantification of CNS lesions (68, 69).

Despite this growing number of available agents, however, it is clear that none of the existing therapies can stop the disease process. Therefore, the search for more efficient therapies continues (13, 14, 70). The list of planned, on-going, or recently completed clinical MS trials (published and regularly updated by the National Multiple Sclerosis Society, which can be accessed at: [www.nationalmssociety.org](http://www.nationalmssociety.org)) currently contains >150 entries. In addition, many potentially promising new agents are being investigated in preclinical studies. These agents can be broadly divided into nonspecific (antigen-nonspecific) and selective (antigen-specific) approaches (Tables 1 and 2).

One principle emerging from our improved understanding of autoimmune mechanisms is that it is more promising to actively strengthen physiological counterregulatory mechanisms than to attempt to passively “delete” putative autoreactive cells from the immune repertoire. Many of the new therapeutic approaches can be viewed as “vaccination” strategies. Their most obvious target is the “immunological synapse” formed between a T cell and an antigen-presenting cell (APC) (71). Located in the center of this synapse, the trimolecular complex of antigen/MHC (on the APC) and the TCR (on the T cell), which confers antigen specificity, are therefore quite literally the “bull’s-eye” of the target at which antigen-selective therapies must aim (72).

#### Putatively Selective Immunotherapies Already Tested or Currently Under Development

**APLs.** APLs are variant peptides that have been modified from an autoantigenic peptide in such a way that the original MHC-binding moieties are retained, but one or several of the TCR-binding amino acids have been changed (73). APLs can bind to TCRs without triggering the full program of T cell activation. For example, an APL may partially activate a T helper (TH) cell to produce IL-4 and help B cells, but fail to induce proliferation. Often, APL stimulation leads to a TH1-to-TH2 cytokine shift. Further, some APLs can induce a form of “anergy” in T cells (anergic T cells are unable to respond to stimulatory ligands). If APL therapy affected only T cells capable of reacting with the APL, then this strategy would most likely fail in human disease. However, APL treatment can have widespread effects by means of bystander suppression (74, 75).

Two phase II trials of an APL derived from an immunodom-

inant peptide of MBP (MBP 83–99) were halted prematurely (31, 75, 76). In one of the trials, a high incidence of immediate-type hypersensitivity reactions occurred, mostly at higher dosage (76). Furthermore, a tendency to trigger exacerbations was observed in one of the two studies (31). These inadvertent results indicate that the APL can cross-stimulate encephalitogenic, MBP (83–99)-specific T cells in certain patients. These trials, however, also showed that APL treatment induces a shift of the T cell response from TH1 to TH2 (76, 77), which is reminiscent of the immunological effect of GA.

**GA (Copolymer 1, Copaxone).** GA is a synthetic random copolymer of the four amino acids L-glutamic acid, L-lysine, L-alanine, and L-tyrosine (78–80). After clinical trials had shown benefit (81–86), GA was approved for the treatment of relapsing remitting MS. The beneficial effects of GA were subsequently confirmed by MRI studies (87). Compared with the MRI-confirmed effects of IFN- $\beta$ , those of GA are delayed (87). This delay appears to be consistent with the time course of the GA-induced immunological changes (88).

GA treatment induces a population of GA-reactive, TH2-type regulatory T cells (“GA-induced TH2 shift”; Fig. 2 and refs. 89–92). Because they are activated, the GA-reactive TH2-like T cells are able to cross the blood–brain barrier. Inside the CNS, they secrete their beneficial antiinflammatory cytokines, including IL-4, IL-6, and IL-10, and thereby create an “antiinflammatory milieu.” Production of the beneficial factors could occur spontaneously, or after cross-stimulation with products of myelin turnover (e.g., MBP and MOG) presented by local APCs. Subsequently, the local milieu is changed in such a way that the production of proinflammatory cytokines (e.g., IL-2 and IFN- $\gamma$ ) by other inflammatory cells is reduced by means of a suppressive bystander effect (93, 94). In addition, the GA-specific regulatory T cells might exert a neurotrophic effect, because GA-specific T cells are capable of producing brain-derived nerve growth factor (95, 96), and the corresponding tyrosine kinase receptor B is up-regulated in neurons in MS lesions (97, 98).

The GA-induced TH2 shift might be explained at least partly by a direct action on APCs, especially dendritic cells and monocytes (99–102). After *in vitro* treatment with GA, dendritic cells have an impaired capacity to secrete TH1 polarizing factors, and therefore preferentially induce TH2 cells (100). Furthermore, GA treatment inhibits monocyte reactivity not only *in vitro* but also *in vivo* (101). In addition, there could be a positive feedback loop between the GA-reactive T cells and the APCs,

**Table 2. Immunomodulatory therapies targeting the trimolecular complex**

Therapies targeting antigen/MHC						
Agent	Study design	Type of MS	No. of subjects	Duration	Status of trial (as of 2004)	Ref(s).
Oral tolerance (bovine myelin)	Randomized, double-blinded	RR	30	1 year	Completed	110
Intravenous infusion of synthetic MBP peptide (regions 82-98 and 85-96)	Double-blinded, placebo-controlled	SP, PP	32	2 years	Completed	152,153
Solubilized DR2:MBP84-102 complex (AG284)	Randomized, double-blinded, placebo-controlled	SP	33	84 days	Completed	154
NBI-5788 (altered peptide ligand)	Randomized, double-blinded, placebo-controlled	RR, SP	150	46 weeks	Ongoing	31,75–77,155
GA* plus natalizumab	Randomized, double-blinded, placebo-controlled	RR	110	28 weeks	Ongoing	†
GA* vs. IFN $\beta$ -1b	Randomized, rater-blinded	RR	110	1 year	Ongoing	†
GA*	Randomized, double-blinded, placebo-controlled	PP	900	3 years	Terminated	†
GA* (oral)	Randomized, double-blinded, placebo-controlled	RR	1300	56 weeks	Terminated	†
GA* plus albuterol	Randomized, double-blinded, placebo-controlled	RR	40	2 years	Ongoing	†
GA* plus mitoxantrone	Open label	RR, SP	50	12 months	Completed	†
GA* vs. different inerteon- $\beta$ preparations	Prospective, controlled, open label	RR	250		Ongoing	†
Therapies targeting TCR						
Humanized mAb (ATM-027) against TCR V- $\beta$ 5.2/5.3	Double-blinded, placebo-controlled	RR	50	16 months	Completed	137
Vaccination with TCR V $\beta$ 6 CDR2 peptide	Open label (phase I)	RR, CP	10 (pre-screened for BV6 over-expression)	24 weeks	Completed	156,157
Vaccination with TCR peptide (CDR2 and BV6S2/6S5)	Open label (phase I)	RR, CP	10 (not pre-screened for BV6 over-expression)	48 weeks	Completed	136
Vaccination with three TCR peptides (BV5S2, BV6S5, and BV13S1) NeuroVax	Partially blinded	RR, SP	20 (interim analysis)	24 weeks	Interim analysis completed	150
T cell vaccination (autologous MBP-specific T cells)	Open label	RR, CP	8	2–5 years	Completed	158,159,160
T cell vaccination (autologous MBP-specific T cells)	Open label (extended phase I)	RR, CP	49	variable	Completed	161
T cell vaccination (autologous irradiated MBP-specific T cells)	Open label	RR, SP	54	24 months	Completed	122
T cell vaccination	Double-blinded	RR	30	1 year	Ongoing	†

Table 2. (continued)

Therapies targeting TCR						
Agent	Study design	Type of MS	No. of subjects	Duration	Status of trial (as of 2004)	Ref(s).
T cell vaccination (T cells specific for MBP, PLP, or MOG synthetic peptides)	Randomized, double-blinded, placebo-controlled	Probable MS, after first attack	76		Ongoing	151
T cell vaccination (IL-2-responsive CD4 <sup>+</sup> T cells from CSF)	Double-blinded, placebo-controlled	RR	60	18 months	Ongoing	123
T cell vaccination (whole-myelin-reactive T cells)	Double-blinded, placebo-controlled (phase II)	SP	80	3 years	Ongoing	162
T cell vaccination (MBP-specific autologous T cells)	Open label	RR	18	24 months	Ongoing	†

List of recently completed and ongoing therapeutic trials of selective immunotherapies in multiple sclerosis. RR, relapsing-remitting; SP, secondary progressive; PP, primary progressive; CP, chronic progressive.

\*For GA, only unpublished trials are shown.

†Based on the National Multiple Sclerosis Society list of clinical trials, which can be accessed at [www.nationalmssociety.org](http://www.nationalmssociety.org); refs. 150 and 151.

because the TH2-polarized T cells can modulate the properties of the APC (103).

The T and B cell responses to GA treatment can be monitored with enzyme-linked immunospot (104) and ELISA (105, 106), respectively. In a pilot study involving a small number of MS patients, the immunological response to GA correlated well with the treatment response (107). The clinical value of these assays for monitoring the therapeutic response needs to be further investigated.

**Tolerogenic Application of Autoantigen.** The aim of several therapies is to induce antigen-specific tolerance by variously modifying the method of applying the antigen. For example, administration of autoantigens via the mucosal surfaces of the gut (“oral tolerance”) or respiratory tract (“nasal tolerance”) can efficiently suppress experimental autoimmune diseases (108, 109). Unfortunately, however, in MS the oral administration of myelin was ineffective, despite encouraging results of a small pilot trial (110).

An interesting emerging approach is the active induction of tolerance by “DNA vaccination.” For example, vaccination with

DNA encoding an autoantigenic peptide of MBP or proteolipid protein can suppress EAE (111–113). It should be noted, however, that vaccination with a MOG-encoding DNA made the disease worse in another EAE model (114). An important advantage of DNA vaccination is that it permits easy modification of the therapeutic vaccine. For example, codelivery of the DNA vaccine and the IL-4 gene provided protective immunity against EAE (115). This approach combines the antigen-specific effects of DNA vaccination and the beneficial effects of local gene delivery.

**T Cell and TCR Vaccination.** The term T cell vaccination was coined in 1981 by Cohen and coworkers (116, 117). He reasoned that, as in microbiology, autoaggressive T cells can be attenuated to eliminate their pathogenic potential, while conserving their capacity to stimulate counterregulatory mechanisms. The original concept of T cell vaccination relies on the injection of autoantigen-specific T cell clones, which must be isolated from the prospective recipient, cultured, inactivated, and then reinjected as a vaccine to stimulate endogenous regulatory circuits (116–119). The regulatory mechanisms that are induced after T cell vaccination include TCR-specific CD8<sup>+</sup> suppressor cells (120).

In pilot trials of vaccination with autologous MBP-specific T cells, the immunological and clinical response was promising, but rigorous proof of efficacy is still lacking (121, 122). Similarly, the results of a pilot vaccination trial with cerebrospinal fluid-derived activated T cells seem promising but need to be confirmed in a larger trial (123).

Peptides of the antigen-specific TCR of autoreactive T cells can also be used for TCR vaccination instead of whole T cells (reviewed in ref. 124). TCR peptide vaccination was pioneered by Brostoff and coworkers and Vandenbark *et al.* (125, 126), who used short synthetic peptides of TCR hypervariable (CDR) regions of the autoaggressive T cells. It is thought that vaccination with such TCR CDR region peptides stimulates TCR-specific counterregulatory T cells, which can also be demonstrated in the healthy human immune system (127, 128). The rationale for this approach is that in several rodent models of autoimmunity, the pathogenic, autoantigen-specific T lymphocytes use a strikingly limited number of available variable-region elements for their antigen receptor (129–131). Immunization of rats against synthetic peptides representing either

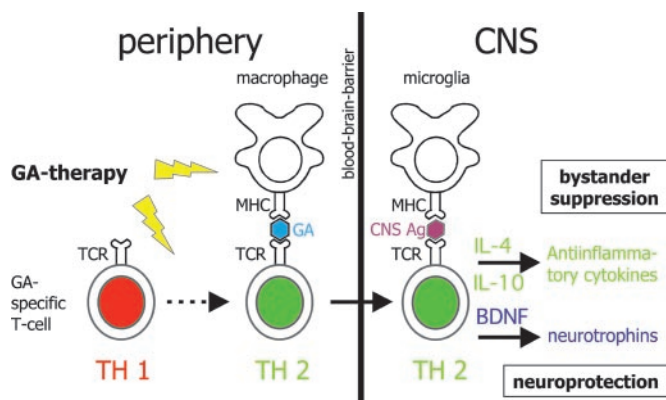


Fig. 2. Proposed mechanism of action of GA, an approved agent for the immunomodulatory treatment of relapsing-remitting MS. See text for details.

the CDR3 (125) or CDR2 region (126) of the TCR of autoaggressive MBP-specific T cells prevented actively induced EAE and shortened ongoing disease (124).

In pilot clinical trials of TCR peptide vaccination, MS patients were immunized with synthetic peptides derived from the CDR regions of different V $\beta$ 5 and V $\beta$ 6 elements (132–136). These particular V $\beta$  elements were chosen because earlier results had indicated that they are preferentially expressed by MBP-specific T cells from MS patients, in contrast to normal controls. The rationale for targeting V $\beta$ 5.2<sup>+</sup> and V $\beta$ 5.3<sup>+</sup> T cells in MS is further supported by the results of an MRI-monitored phase II trial of a humanized anti-V $\beta$ 5.2/V $\beta$ 5.3 monoclonal antibody (137). These pilot studies of TCR vaccination have not yet demonstrated significant clinical benefits, but further results are needed. In future studies, TCR vaccination is likely to be improved by DNA-based vaccination techniques (138, 139).

The success of TCR vaccination depends on the extent of diversity of the human T cell response to MBP and other encephalitogenic antigens. It is clear that the human T cell response to the most widely studied potential encephalitogen, MBP, is extremely complex, and there is no convincing evidence for an overall preference of certain TCR V $\beta$  elements (23, 140). Therefore, it must be anticipated that TCR vaccination will work only if patients are treated with individualized, “tailor-designed” vaccines.

**Genetically Engineered T Cells for Treatment of CNS Diseases.** Genetic manipulation of CNS antigen-specific T cells has opened perspectives for selective immunotherapy. Transduction of antigen-specific T cells with GFP allowed the *in vivo* tracking of encephalitogenic T cells after transfer (141). This procedure helped to identify a special “migratory phenotype” that the T cells acquire in the periphery before they invade the CNS (142). At this migratory stage, it might be possible to target the pathogenic T cells very selectively. Furthermore, in a different

approach, antigen-specific T cells could be engineered to express beneficial factors like antiinflammatory cytokines and neurotrophic factors (143–147). The genetically manipulated T cells of known receptor specificity could be used to deliver the transgene of interest specifically to the tissues that express the corresponding antigen.

### Outlook: From Passive Deletion of “Forbidden Clones” to Active Induction of Self-Tolerance

The development of therapeutic strategies for MS has followed the evolution of the concepts of autoimmunity. Burnet (148) originally considered autoreactive immune cells to be “forbidden clones.” According to his view, therapy should aim to delete these putatively dangerous cells. This is the desired effect of classical immunosuppressive therapy, but this outcome would be at the cost of deleting beneficial regulatory cells. Subsequently, however, it has become more and more apparent that “autoreactivity” *per se* is by no means a pathological phenomenon. On the contrary, autoreactive immune cells are essential components of the healthy immune system, and they might even serve (neuro) protective functions (97, 149). Accordingly, newer therapies aim at actively inducing tolerance rather than passively deleting “forbidden clones.” For example, APL, GA, DNA, and T cell vaccination all depend on active immunoregulatory mechanisms. One dilemma of the selective, antigen-specific immunotherapies is that the target antigen(s) of the pathogenic immune response in MS has (have) not been identified with certainty. New techniques may eventually help to achieve this ambitious goal and thereby provide the basis for a more efficient and “gentle” therapy and perhaps even cure of MS (163).

We thank Ms. J. Benson for editing the manuscript. This work was supported by the Max Planck Society, Deutsche Forschungsgemeinschaft Grant SFB 571, and the Hermann and Lilly Schilling Foundation.

- Noseworthy, J. H., Lucchinetti, C. F., Rodriguez, M. & Weinshenker, B. G. (2000) *N. Engl. J. Med.* **343**, 938–952.
- Lassmann, H., Brück, W. & Lucchinetti, C. (2001) *Trends Mol. Med.* **7**, 115–121.
- Meinl, E. (1999) *Curr. Opin. Neurol.* **12**, 303–307.
- Wekerle, H. (1998) *Nat. Med.* **4**, 770–771.
- Steinman, L. (2003) *J. Exp. Med.* **197**, 1065–1071.
- Ben-Nun, A., Wekerle, H. & Cohen, I. R. (1981) *Eur. J. Immunol.* **11**, 195–199.
- Schluessener, H. J., Sobel, R. A., Lington, C. & Weiner, H. L. (1987) *J. Immunol.* **139**, 4016–4021.
- Lington, C., Bradl, M., Lassmann, H., Brunner, C. & Vass, K. (1988) *Am. J. Pathol.* **130**, 443–454.
- Huseby, E. S., Liggitt, D., Brabb, T., Schnabel, B., Öhlén, C. & Goverman, J. (2001) *J. Exp. Med.* **194**, 669–676.
- Sun, D. M., Whitaker, J. N., Huang, Z. G., Liu, D., Coleclough, C., Wekerle, H. & Raine, C. S. (2001) *J. Immunol.* **166**, 7579–7587.
- Wekerle, H., Kojima, K., Lannes-Vieira, J., Lassmann, H. & Lington, C. (1994) *Ann. Neurol.* **36**, S47–S53.
- The Lenercept MS Study Group and The UBCMS/MRI Analysis Group. (1999) *Neurology* **53**, 457–465.
- Hohlfeld, R. (1997) *Brain* **120**, 865–916.
- Wiendl, H. & Hohlfeld, R. (2003) *BioDrugs* **16**, 183–200.
- Lucchinetti, C. F., Brück, W., Parisi, J., Scheithauer, B., Rodriguez, M. & Lassmann, H. (2000) *Ann. Neurol.* **47**, 707–717.
- Dornmair, K., Goebels, N., Weltzien, H. U., Wekerle, H. & Hohlfeld, R. (2003) *Am. J. Pathol.* **163**, 1215–1226.
- Schluessener, H. J. & Wekerle, H. (1985) *J. Immunol.* **135**, 3128–3133.
- Pette, M., Fujita, K., Wilkinson, D., Altmann, D. M., Trowsdale, J., Giegerich, G., Hinkkanen, A., Epplen, J. T., Kappos, L. & Wekerle, H. (1990) *Proc. Natl. Acad. Sci. USA* **87**, 7968–7972.
- Pette, M., Fujita, K., Kitz, B., Whitaker, J. N., Albert, E., Kappos, L. & Wekerle, H. (1990) *Neurology* **40**, 1770–1776.
- Burns, J., Rosenzweig, A., Zweiman, B. & Lisak, R. P. (1983) *Cell. Immunol.* **81**, 435–440.
- Ota, K., Matsui, M., Milford, E. L., Mackin, G. A., Weiner, H. L. & Hafler, D. A. (1990) *Nature* **346**, 183–187.
- Martin, R., Howell, M. D., Jaraquemada, D., Flerlage, M., Richert, J., Brostoff, S., Long, E. O., McFarland, D. E. & McFarland, H. F. (1991) *J. Exp. Med.* **173**, 19–24.
- Meinl, E., Weber, F., Drexler, K., Morelle, C., Ott, M., Saruhan-Direskeneli, G., Goebels, N., Ertl, B., Jechart, G., Giegerich, G., et al. (1993) *J. Clin. Invest.* **92**, 2633–2643.
- Goebels, N., Hofstetter, H., Schmidt, S., Brunner, C., Wekerle, H. & Hohlfeld, R. (2000) *Brain* **123**, 508–518.
- Zamvil, S. S. & Steinman, L. (1990) *Annu. Rev. Immunol.* **8**, 579–622.
- Meinl, E., Hart, B. A., Bontrop, R. E., Hoch, R. M., Iglesias, A., De Waal Malefijt, R., Fickenscher, H., Müller-Fleckenstein, I., Fleckenstein, B., Wekerle, H., et al. (1995) *Int. Immunol.* **7**, 1489–1495.
- Meinl, E., Hoch, R. M., Dornmair, K., De Waal Malefijt, R., Bontrop, R. E., Jonker, M., Lassmann, H., Hohlfeld, R., Wekerle, H. & Hart, B. A. (1997) *Am. J. Pathol.* **150**, 445–453.
- Genain, C. P., Lee-Parritz, D., Nguyen, M.-H., Massacesi, L., Joshi, N., Ferrante, R., Hoffman, K., Moseley, M., Letvin, N. L. & Hauser, S. L. (1994) *J. Clin. Invest.* **94**, 1339–1345.
- Villoslada, P., Abel, K., Heald, N., Goertsches, R., Hauser, S. L. & Genain, C. P. (2001) *Eur. J. Immunol.* **31**, 2942–2950.
- Madsen, L. S., Andersson, E. C., Jansson, L., Krogsgaard, M., Andersen, C. B., Engsborg, J., Strominger, J. L., Svejgaard, A., Holmdahl, R., Wucherpfennig, K. W., et al. (1999) *Nat. Genet.* **23**, 343–347.
- Bielekova, B., Goodwin, B., Richert, N., Cortese, I., Kondo, T., Afshar, G., Gran, B., Eaton, J., Antel, J., Frank, J. A., et al. (2000) *Nat. Med.* **6**, 1167–1175.
- Schmidt, S. (1999) *Mult. Scler.* **5**, 147–160.
- Zhang, J., Markovic-Plese, S., Lacet, B., Raus, J., Weiner, H. L. & Hafler, D. A. (1994) *J. Exp. Med.* **179**, 973–984.
- Allegretta, M., Nicklas, J. A., Sriram, S. & Albertini, R. J. (1990) *Science* **247**, 718–721.
- Markovic-Plese, S., Cortese, I., Wandinger, K. P., McFarland, H. F. & Martin, R. (2001) *J. Clin. Invest.* **108**, 1185–1194.
- Lovett-Racke, A. E., Trotter, J. L., Lauber, J., Perrin, P. J., June, C. H. & Racke, M. K. (1998) *J. Clin. Invest.* **101**, 725–730.
- Scholz, C., Patton, K. T., Anderson, D. E., Freeman, G. J. & Hafler, D. A. (1998) *J. Immunol.* **160**, 1532–1538.
- Bielekova, B., Muraro, P. A., Golestaneh, L., Pascal, J., McFarland, H. F. & Martin, R. (1999) *J. Neuroimmunol.* **100**, 115–123.
- Bielekova, B., Sung, M. H., Kadom, N., Simon, R., McFarland, H. & Martin, R. (2004) *J. Immunol.* **172**, 3893–3904.
- Lehmann, P. V., Sercarz, E. E., Forsthuber, T., Dayan, C. M. & Gammon, G. (1993) *Immunol. Today* **14**, 203–208.
- Liston, A., Lesage, S., Wilson, J., Peltonen, J. & Goodnow, C. C. (2003) *Nat. Immunol.* **4**, 350–354.
- Oldstone, M. B. A. (1987) *Cell* **50**, 819–820.
- Lang, H. L. E., Jacobsen, H., Ikemizu, S., Andersson, C., Harlos, K., Madsen, L., Hjorth, P., Sondergaard, L., Svejgaard, A., Wucherpfennig, K., et al. (2002) *Nat. Immunol.* **3**, 940–943.
- Gran, B., Hemmer, B., Vergelli, M., McFarland, H. F. & Martin, R. (1999) *Ann. Neurol.* **45**, 559–567.
- Viglietta, V., Baecher-Allan, C., Weiner, H. L. & Hafler, D. A. (2004) *J. Exp. Med.* **199**, 971–979.
- Furtado, G. D., Olivares-Villagomez, D., de Lafaille, M. A. C., Wensky, A. K., Latkowski, J. A. & Lafaille, J. J. (2001) *Immunol. Rev.* **182**, 122–134.
- Bach, J.-F. (2003) *Nat. Rev. Immunol.* **3**, 189–198.
- von Herrath, M. G. & Harrison, L. C. (2003) *Nat. Rev. Immunol.* **3**, 223–232.
- Barnett, M. H. & Prineas, J. W. (2004) *Ann. Neurol.* **55**, 458–468.
- Trapp, B. D. (2004) *Ann. Neurol.* **55**, 455–457.

51. Oksenberg, J. R., Stuart, S., Begovich, A. B., Bell, R. B., Erlich, H. A., Steinman, L. & Bernard, C. C. A. (1990) *Nature* **345**, 344–346.
52. Oksenberg, J. R., Panzara, M. A., Begovich, A. B., Mitchell, D., Erlich, H. A., Murray, R. S., Shimonkevitz, R., Sherritt, M., Rothbard, J., Bernard, C. C. A., et al. (1993) *Nature* **362**, 68–70.
53. Babbe, H., Roers, A., Waisman, A., Lassmann, H., Goebels, N., Hohlfeld, R., Friese, M., Schröder, R., Deckert, M., Schmidt, S., et al. (2000) *J. Exp. Med.* **192**, 393–404.
54. Skulina, C., Schmidt, S., Dornmair, K., Babbe, H., Roers, A., Rajewsky, K., Wekerle, H., Hohlfeld, R. & Goebels, N. (2004) *Proc. Natl. Acad. Sci. USA* **101**, 2428–2433.
55. Hemmer, B., Archelos, J. J. & Hartung, H.-P. (2002) *Nat. Rev. Neurosci.* **3**, 291–301.
56. Neumann, H., Medana, I. M., Bauer, J. & Lassmann, H. (2002) *Trends Neurosci.* **25**, 313–319.
57. Archelos, J. J., Storch, M. K. & Hartung, H.-P. (2000) *Ann. Neurol.* **46**, 694–706.
58. Qin, Y., Duquette, P., Zhang, Y., Poole, R. & Antel, J. P. (1998) *J. Clin. Invest.* **102**, 1045–1050.
59. Owens, G. P., Kraus, H., Burgoon, M. P., Smith-Jensen, T., Devlin, M. E. & Gilden, D. H. (1998) *Ann. Neurol.* **43**, 236–243.
60. Baranzini, S. E., Jeong, M. C., Butunoi, C., Murray, R. S., Bernard, C. C. A. & Oksenberg, J. R. (1999) *J. Immunol.* **163**, 5133–5144.
61. Colombo, M., Dono, M., Gazzola, P., Roncella, S., Valetto, A., Chiorazzi, N., Mancardi, G. L. & Ferrarini, M. (2000) *J. Immunol.* **164**, 2782–2789.
62. Owens, G. C., Ritchie, A. M., Burgoon, M. P., Williamson, R. A., Corboy, J. R. & Gilden, D. H. (2003) *J. Immunol.* **171**, 2725–2733.
63. Robinson, W. H., DiGennaro, C., Hueber, W., Haab, B. B., Kamachi, M., Dean, E. J., Fournel, S., Fong, D., Genovese, M. C., De Vegvar, H. E. N., et al. (2002) *Nat. Med.* **8**, 295–301.
64. Robinson, W. H., Fontoura, P., Lee, B. J., De Vegvar, H. E. N., Tom, J., Pedotti, R., DiGennaro, C. D., Mitchell, D. J., Fong, D., Ho, P. P. K., et al. (2003) *Nat. Biotechnol.* **21**, 1033–1039.
65. Goodin, D. S., Frohman, E. M., Garmany, G. P., Halper, J., Likosky, W. H., Lublin, F. D., Silberberg, D. H., Stuart, W. H. & Van den Noort, S. (2002) *Neurology* **58**, 169–178.
66. Polman, C. H. & Uitdehaag, B. M. J. (2003) *Lancet Neurol.* **2**, 563–566.
67. Neuhaus, O., Archelos, J. J. & Hartung, H.-P. (2003) *Trends Pharmacol. Sci.* **24**, 131–138.
68. Miller, D. H., Grossman, R. I., Reingold, S. C. & McFarland, H. F. (1998) *Brain* **121**, 3–24.
69. Filippi, M. & Grossman, R. I. (2004) *Neurology* **58**, 1147–1153.
70. Martin, R., Sturzebecher, C. S. & McFarland, H. F. (2001) *Nat. Immunol.* **2**, 785–788.
71. Huppa, J. B. & Davis, M. M. (2003) *Nat. Rev. Immunol.* **3**, 973–983.
72. Hohlfeld, R. (1989) *Ann. Neurol.* **25**, 531–538.
73. Sloan-Lancaster, J. & Allen, P. M. (1996) *Annu. Rev. Immunol.* **14**, 1–27.
74. Steinman, L. (2000) *J. Autoimmun.* **14**, 278–282.
75. Genain, C. P. & Zamvil, S. S. (2000) *Nat. Med.* **1098**–1100.
76. Kappos, L., Comi, G., Panitch, H., Oger, J., Antel, J., Conlon, P. & Steinman, L. (2000) *Nat. Med.* **6**, 1176–1182.
77. Crowe, P. D., Qin, Y. F., Conlon, P. J. & Antel, J. P. (2000) *Ann. Neurol.* **48**, 758–765.
78. Sela, M., Arnon, R. & Teitelbaum, D. (1990) *Bull. Inst. Pasteur (Paris)* **88**, 303–314.
79. Teitelbaum, D., Arnon, R. & Sela, M. (1997) *J. Neural Transm. Suppl.* **49**, 85–91.
80. Sela, M. (2003) *J. Cell Biol.* **278**, 48507–48519.
81. Bornstein, M. B., Miller, A., Slagle, S., Weitzman, M., Crytsal, H., Drexler, E., Keilson, M., Merriam, A., Wassertheil-Smolter, S., Spada, V., et al. (1987) *N. Engl. J. Med.* **317**, 408–414.
82. Bornstein, M. B., Miller, A., Slagle, S., Weitzman, M., Drexler, E., Keilson, M., Spada, V., Weiss, W., Appel, S., Rolak, L., et al. (1991) *Neurology* **41**, 533–539.
83. Wolinsky, J. S. (1995) *Neurology* **45**, 1245–1247.
84. Johnson, K. P., Brooks, B. R., Cohen, J. A., Ford, C. C., Goldstein, J., Lisak, R. P., Myers, L. W., Panitch, H. S., Rose, J. W., Schiffer, R. B., et al. (1995) *Neurology* **45**, 1268–1276.
85. Johnson, K. P., Brooks, B. R., Cohen, J. A., Ford, C. C., Goldstein, J., Lisak, R. P., Myers, L. W., Panitch, H. S., Rose, J. W., Schiffer, R. B., et al. (1998) *Neurology* **50**, 701–708.
86. Johnson, K. P., Brooks, B. R., Ford, C. C., Goodman, A., Guarnaccia, J., Lisak, R. P., Myers, L. W., Panitch, H. S., Pruiit, A., Rose, J. W., et al. (2000) *Mult. Scler.* **6**, 255–266.
87. Comi, G., Filippi, M., Wolinsky, J. S. (2001) *Ann. Neurol.* **49**, 290–297.
88. Neuhaus, O., Farina, C., Wekerle, H. & Hohlfeld, R. (2001) *Neurology* **56**, 702–706.
89. Dhib-Jalbut, S., Chen, M., Said, A., Zhan, M., Johnson, K. P. & Martin, R. (2003) *J. Neuroimmunol.* **140**, 163–171.
90. Duda, P. W., Krieger, J. I., Cook, S. L. & Hafler, D. A. (2000) *J. Clin. Invest.* **105**, 967–976.
91. Gran, B., Tranquill, L. R., Chen, M., Bielekova, B., Zhou, W., Dhib-Jalbut, S. & Martin, R. (2000) *Neurology* **55**, 1704–1714.
92. Neuhaus, O., Farina, C., Yassouridis, A., Wiendl, H., Then Bergh, F., Dose, T., Wekerle, H. & Hohlfeld, R. (2000) *Proc. Natl. Acad. Sci. USA* **97**, 7452–7457.
93. Aharoni, R., Teitelbaum, D., Sela, M. & Arnon, R. (1998) *J. Neuroimmunol.* **91**, 135–146.
94. Weiner, H. L. (1999) *Proc. Natl. Acad. Sci. USA* **96**, 3333–3335.
95. Ziemssen, T., Kumpfel, T., Klinkert, W. E. F., Neuhaus, O. & Hohlfeld, R. (2002) *Brain* **125**, 2381–2391.
96. Aharoni, R., Kayhan, B., Eilam, R., Sela, M. & Arnon, R. (2003) *Proc. Natl. Acad. Sci. USA* **100**, 14157–14162.
97. Kerschesteiner, M., Stadelmann, C., Dechant, G., Wekerle, H. & Hohlfeld, R. (2003) *Ann. Neurol.* **53**, 292–304.
98. Stadelmann, C., Kerschesteiner, M., Misgeld, T., Brück, W., Hohlfeld, R. & Lassmann, H. (2002) *Brain* **125**, 75–85.
99. Hussien, Y., Sanna, A., Soderstrom, M., Link, H. & Huang, Y. M. (2001) *J. Neuroimmunol.* **121**, 102–110.
100. Vieira, P. L., Heystek, H. C., Wormmeester, J., Wierenga, E. A. & Kapsenberg, M. L. (2003) *J. Immunol.* **170**, 4483–4488.
101. Weber, M. S., Starck, M., Wagenpfeil, S., Meinel, E., Hohlfeld, R. & Farina, C. (2004) *Brain* **127**, 1370–1378.
102. Jung, S., Siglienti, I., Grauer, O., Magnus, T., Scarlato, G. & Toyka, K. (2004) *J. Neuroimmunol.* **148**, 63–73.
103. Kim, H. J., Ifergan, I., Seguin, R., Duddy, M., Lapierre, Y., Jalil, F. & Bar-Or, A. (2004) *J. Immunol.* **172**, 7144–7153.
104. Farina, C., Then Bergh, F., Albrecht, H., Meinel, E., Yassouridis, A., Neuhaus, O. & Hohlfeld, R. (2001) *Brain* **124**, 705–719.
105. Brenner, T., Arnon, R., Sela, M., Abramsky, O., Meiner, Z., Riven-Kreitman, R., Tarcic, N. & Teitelbaum, D. (2001) *J. Neuroimmunol.* **115**, 152–160.
106. Farina, C., Vargas, V., Heydari, N., Kumpfel, T., Meinel, E. & Hohlfeld, R. (2002) *J. Neuroimmunol.* **123**, 188–192.
107. Farina, C., Wagenpfeil, S. & Hohlfeld, R. (2002) *J. Neurosci.* **24**, 1587–1592.
108. Weiner, H. L. (2000) *J. Clin. Invest.* **106**, 935–937.
109. Wraith, D. C. (1996) *Int. Arch. Allergy Appl. Immunol.* **108**, 355–359.
110. Weiner, H. L., Mackin, G. A., Matsui, M., Orav, E. J., Khoury, S. J., Dawson, D. M. & Hafler, D. A. (1993) *Science* **259**, 1321–1324.
111. Lobell, A., Weissert, R., Storch, M. K., Svahnolm, C., De Graaf, K. L., Lassmann, H., Andersson, R., Olsson, T. & Wiggell, H. (1998) *J. Exp. Med.* **187**, 1543–1548.
112. Weissert, R., Lobell, A., De Graaf, K. L., Eltayeb, S. Y., Andersson, R., Olsson, T. & Wiggell, H. (2000) *Proc. Natl. Acad. Sci. USA* **97**, 1689–1694.
113. Ruiz, P. J., Garren, H., Ruiz, I. U., Hirschberg, D. L., Nguyen, L. V. T., Karpuz, M. V., Cooper, M. T., Mitchell, D. J., Fathman, C. G. & Steinman, L. (1999) *J. Immunol.* **162**, 3336–3341.
114. Bourquin, C., Iglesias, A., Berger, T., Wekerle, H. & Linington, C. (2000) *Eur. J. Immunol.* **30**, 3663–3671.
115. Garren, H., Ruiz, P. J., Watkins, T. A., Fontoura, P., Nguyen, L.-V., Estline, E. R., Hirschberg, D. L. & Steinman, L. (2001) *Immunity* **15**, 15–22.
116. Ben-Nun, A., Wekerle, H. & Cohen, I. R. (1981) *Nature* **292**, 60–61.
117. Ben-Nun, A. & Cohen, I. R. (1981) *Eur. J. Immunol.* **11**, 949–952.
118. Sun, D., Ben-Nun, A. & Wekerle, H. (1988) *Eur. J. Immunol.* **18**, 1993–2000.
119. Sun, D., Qin, Y., Chluba, J., Epplen, J. T. & Wekerle, H. (1988) *Nature* **332**, 843–845.
120. Jiang, H., Kashleva, H., Xu, L.-X., Forman, J., Flaherty, L., Pernis, B., Braunstein, N. S. & Chess, L. (1998) *Proc. Natl. Acad. Sci. USA* **95**, 4533–4537.
121. Zang, Y. C. Q., Hong, J., Rivera, V. M., Killian, J. M. & Zhang, J. Z. (2000) *J. Immunol.* **164**, 4011–4017.
122. Zhang, J. Z., Rivera, V. M., Tejada-Simon, M. V., Yang, D. Y., Hong, J., Li, S. F., Haykal, H., Killian, J. & Zang, Y. C. Q. (2002) *J. Neurosci.* **24**, 212–218.
123. Van der Aa, A., Hellings, N., Medaer, R., Gelin, G., Palmers, Y., Raus, J. & Stinissen, P. (2003) *Clin. Exp. Immunol.* **131**, 155–168.
124. Vandenberg, A. A., Hashim, G. A. & Offner, H. (1996) *J. Neurosci. Res.* **43**, 391–402.
125. Howell, M. D., Winters, S. T., Olee, T., Powell, H. C., Carlo, D. J. & Brostoff, S. W. (1989) *Science* **246**, 668–670.
126. Vandenberg, A. A., Hashim, G. & Offner, H. (1989) *Nature* **341**, 541–544.
127. Saruhan-Direskeneli, G., Weber, F., Meinel, E., Pette, M., Giegerich, G., Hinkkanen, A., Epplen, J. T., Hohlfeld, R. & Wekerle, H. (1993) *Eur. J. Immunol.* **23**, 530–536.
128. Zipp, F., Kerschesteiner, M., Dornmair, K., Malotka, J., Schmidt, S., Bender, A., Giegerich, G., De Waal Malefijt, R., Wekerle, H. & Hohlfeld, R. (1998) *Brain* **121**, 1395–1407.
129. Acha-Orbea, H., Mitchell, D. J., Timmermann, L., Wraith, D. C., Tausch, G. S., Waldor, M. K., Zamvil, S. S., McDevitt, H. O. & Steinman, L. (1988) *Cell* **54**, 263–273.
130. Chluba, J., Steeg, C., Becker, A., Wekerle, H. & Epplen, J. T. (1989) *Eur. J. Immunol.* **19**, 279–284.
131. Urban, J. L., Kumar, V., Kono, D. H., Gomez, C., Horvath, S. J., Clayton, J., Ando, D. G., Sercarz, E. E. & Hood, L. (1988) *Cell* **54**, 577–592.
132. Bourdette, D. N., Whitham, R. H., Chou, Y. K., Morrison, W. J., Atherton, J., Kenny, C., Liefeld, D., Hashim, G. A., Offner, H. & Vandenberg, A. A. (1994) *J. Immunol.* **152**, 2510–2519.
133. Chou, Y. K., Morrison, W. J., Weinberg, A. D., Dedrick, R., Whitham, R., Bourdette, D. N., Hashim, G. A., Offner, H. & Vandenberg, A. A. (1994) *J. Immunol.* **152**, 2520–2529.
134. Vandenberg, A. A., Chou, Y. K., Whitham, R., Mass, M., Buenafe, A., Liefeld, D., Kavanagh, D., Cooper, S., Hashim, G. A., Offner, H., et al. (1996) *Nat. Med.* **2**, 1109–1115.
135. Antel, J. P., Becher, B. & Owens, T. (1996) *Nat. Med.* **2**, 1074–1075.
136. Morgan, E. E., Nardo, C. J., Dively, J. P., Bartholomew, R. M., Moss, R. B. & Carlo, D. J. (2001) *J. Neurosci. Res.* **64**, 298–301.
137. Killestein, J., Olsson, T., Wallström, E., Svenningsson, A., Khademi, M., Blumhardt, L. D., Fagius, J., Hillert, J., Landtblom, A.-M., Edenius, C., et al. (2002) *Ann. Neurol.* **51**, 467–474.
138. Chunduru, S. K., Sutherland, R. M., Stewart, G. A., Doms, R. W. & Paterson, Y. (1996) *J. Immunol.* **156**, 4940–4945.
139. Waisman, A., Ruiz, P. J., Hirschberg, D. L., Gelman, A., Oksenberg, J. R., Brocke, S., Mor, F., Cohen, I. R. & Steinman, L. (1996) *Nat. Med.* **2**, 899–905.
140. Hafler, D. A., Saadeh, M. G., Kuchroo, V. K., Milford, E. & Steinman, L. (1996) *Immunol. Today* **17**, 152–159.
141. Flügel, A., Willem, M., Berkowicz, T. & Wekerle, H. (1999) *Nat. Med.* **5**, 843–847.
142. Flügel, A., Berkowicz, T., Ritter, T., Labeur, M., Jenne, D., Li, Z., Ellwart, J., Willem, M., Lassmann, H. & Wekerle, H. (2001) *Immunity* **14**, 547–560.
143. Kramer, R., Zhang, Y., Gehrman, J., Gold, R., Thoenen, H. & Wekerle, H. (1995) *Nat. Med.* **1**, 1162–1166.
144. Flügel, A., Matsumuro, K., Neumann, H., Klinkert, W. E. F., Birnbacher, R., Lassmann, H., Otten, U. & Wekerle, H. (2001) *Eur. J. Immunol.* **31**, 11–22.
145. Mathisen, P. M., Yu, M., Johnson, J. M., Drazba, J. A. & Tuohy, V. K. (1997) *J. Exp. Med.* **186**, 159–164.
146. Shaw, M. K., Lorens, J. B., Dhawan, A., DalCanto, R., Tse, H. Y., Tran, A. B., Bonpane, C., Eswaran, S. L., Brocke, S., Sarvetnick, N., et al. (1997) *J. Exp. Med.* **185**, 1711–1714.
147. Furlan, R., Pluchino, S. & Martino, G. (2003) *Curr. Opin. Neurol.* **16**, 385–392.
148. Burnet, F. M. (1959) *The Clonal Selection Theory of Acquired Immunity* (Cambridge Univ. Press, Cambridge, U.K.).
149. Moalem, G., Leibowitz-Amit, R., Yoles, E., Mor, F., Cohen, I. R. & Schwartz, M. (1999) *Nat. Med.* **5**, 49–55.
150. Vandenberg, A. A., Morgan, E., Bartholomew, R., Bourdette, D., Whitham, R., Carlo, D., Gold, D., Hashim, G. & Offner, H. (2001) *Neurochem. Res.* **26**, 713–730.
151. Achiron, A. & Mandel, M. (2004) *Autoimmun. Rev.* **3**, 25–32.
152. Warren, K. G. & Catz, I. (1997) *J. Neurol. Sci.* **148**, 67–78.
153. Warren, K. G. & Catz, I. (2000) *Mult. Scler.* **6**, 300–311.
154. Goodkin, D. E., Shulman, M., Winkelhake, M. J., Waubant, E., Andersson, P.-B., Stewart, T., Nelson, S., Fischbein, N., Coyle, P. K., Jacobs, L., et al. (2000) *Neurology* **65**, 1414–1420.
155. Kim, H. J., Antel, J. P., Duquette, P., Alleva, D. G., Conlon, P. J. & Bar-Or, A. (2002) *Clin. Immunol.* **104**, 105–114.
156. Gold, D. P., Smith, R. A., Golding, A. B., Morgan, E. E., Dafashy, T., Nelson, J., Smith, L., Dively, J., Laxer, J. A., Richieri, S. P., et al. (1997) *J. Neuroimmunol.* **76**, 29–38.
157. Wilson, D. B., Golding, A. B., Smith, R. A., Dafashy, T., Nelson, J., Carlo, D. J., Brostoff, S. W. & Gold, D. P. (1997) *J. Neuroimmunol.* **76**, 15–28.
158. Zhang, J., Medaer, R., Stinissen, P., Hafler, D. A. & Zhang, J. (1993) *Science* **261**, 1451–1454.
159. Medaer, R., Stinissen, P., Truyen, L., Raus, J. & Raus, J. (1995) *Lancet* **346**, 807–808.
160. Hermans, G., Medaer, R., Raus, J. & Stinissen, P. (2000) *J. Neuroimmunol.* **102**, 79–84.
161. Hermans, G., Denzer, U., Lohse, A., Raus, J. & Stinissen, P. (1999) *J. Autoimmun.* **13**, 233–246.
162. Correale, J., Lund, B., McMillan, M., Ko, D. Y., McCarthy, K. & Weiner, L. P. (2000) *J. Neuroimmunol.* **107**, 130–139.
163. Weiner, H. L. (2004 in *Curing MS: How Science is Solving the Mysteries of Multiple Sclerosis* (Crown Publishers, New York), pp. 1–309.
164. Küppers, R., Zhao, M., Hansmann, M. L. & Rajewski, K. (1993) *EMBO J.* **12**, 4955–4967.